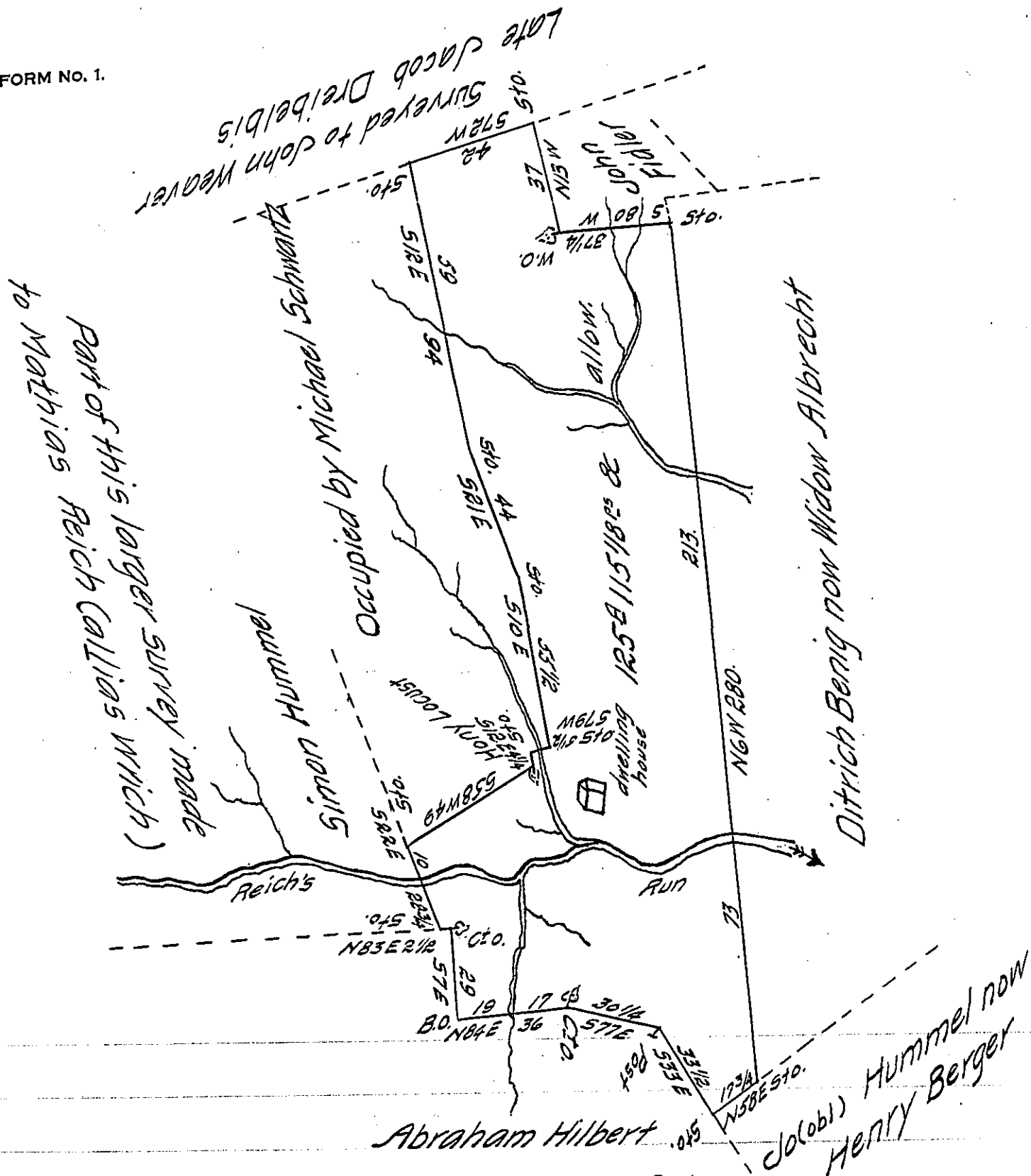


FORM No. 1.



Situate in Manheim Township Schuylkill County surveyed to Jacob Scholl. On the 26th of November A.D. 1821. It being a part of the same larger tract of 431⁹/₁₆ 57⁹/₁₆ & allowance. Which was Originally surveyed to Matthias Reich (Callias Wrich) by virtue of an Appli^o N^o 3513 dated the 1st August 1768

To Samuel Cochran Esq^r By Jn. Dreher D.S.
 Surveyor Ge^l of Pen^a

The improvements on the above tract consist of a dwelling house a Barn garden, Orchard, and about 2³/₄ of the land is clear.

Jn. Dreher D.S

IN TESTIMONY that the above is a copy of the original remaining on file in the Department of Internal Affairs of Pennsylvania, made conformably to an Act of Assembly approved the 16th day of February 1833, I have hereunto set my hand and caused the Seal of said Department to be affixed at Harrisburg, this eighteenth day of January 1907.

Isaac R. Brown
 Secretary of Internal Affairs.